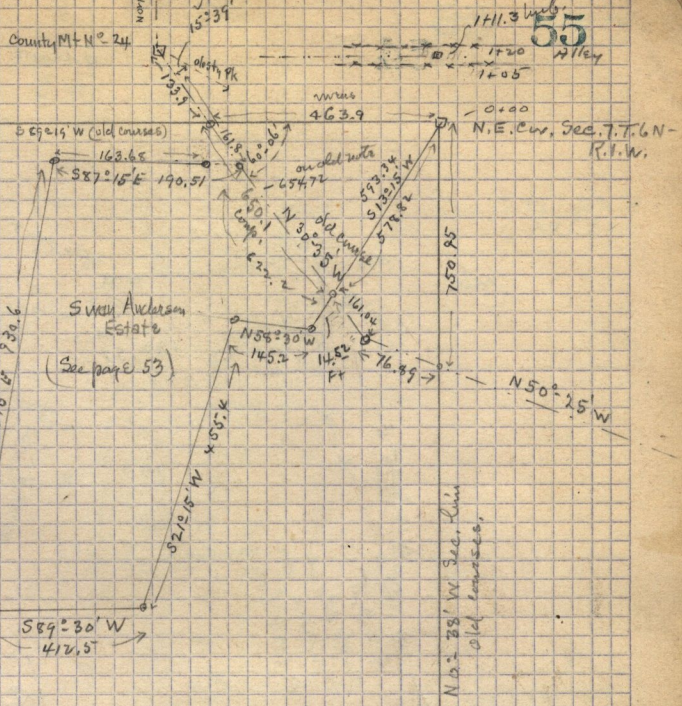


old ties to Co. Mt. 24
 N. 36.8 ft Pop. tree
 NE 58.1
 SW 35.3 " decayed balmer tree
 SE 78.55 " " poplar & others
 NW 48.3 pole
 S 46.24 E obelisk pk.
 N 13.05 E barrel pk.
 S 71.11 E 54.3.2 to N.E. cor. Sec. 7
 (S 75.20 - 30.5 & 3.5) .. connected to corner



{ Time Calculating Corrections from }
 Mount 24 - to the 11th Run
 N 77. 15 W - 5 hours = 161.5

New trees June 30-1906
 N E 17.6 to S.W. cor. Lewis Taylor
 Adams house base.
 N E 21.3 Birch pole.
 S E 90.5
 West 26.5 Birch pole tie on N line alley.
 N E 69.0 Incl. Tel. pole.

See Q. pg. 62

bearings here are according to old Co. Road notes

Note!